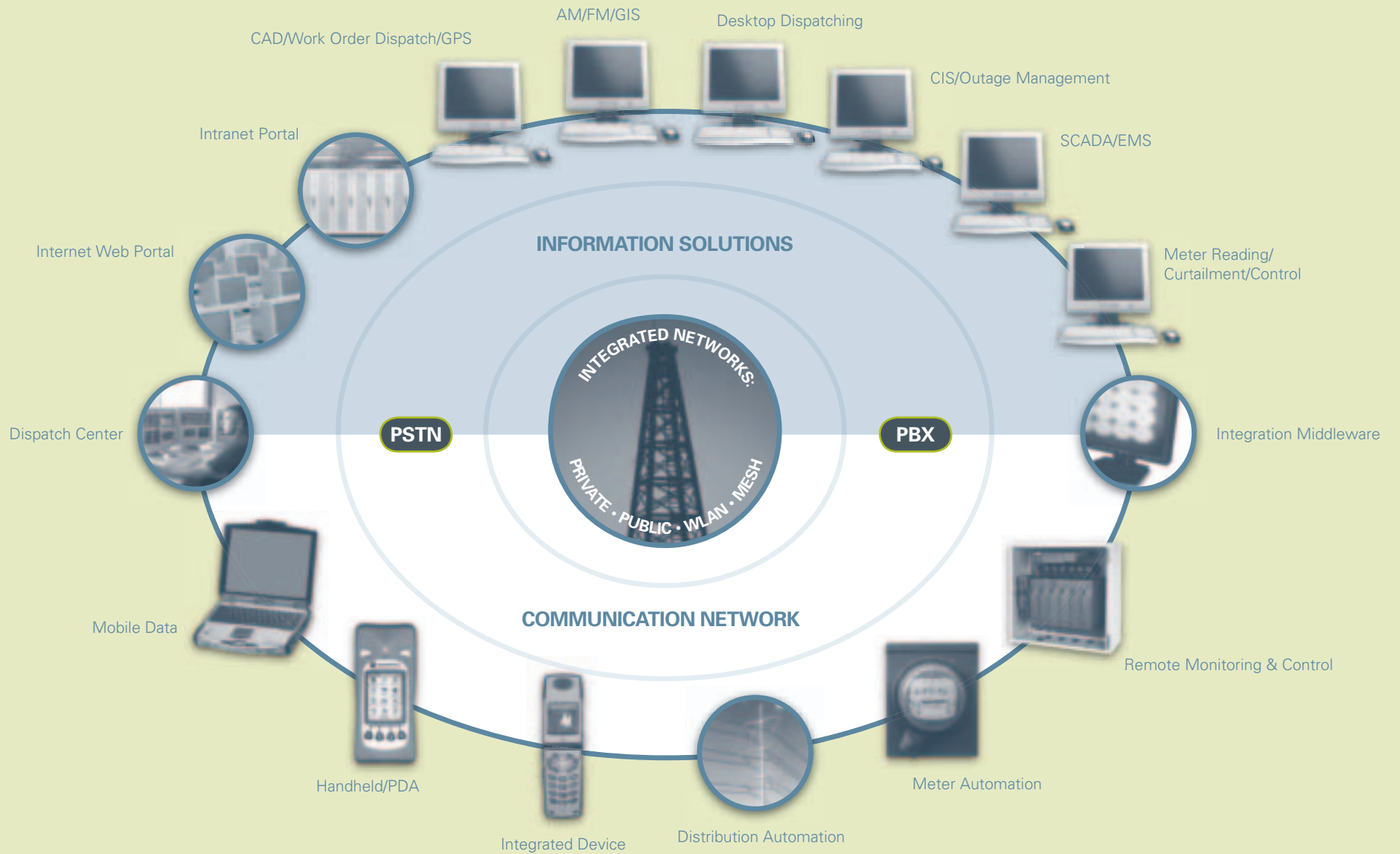


# eWIN: Enterprise-Wide Integrated Networks

Solutions that allow utilities to seamlessly monitor, know and act with the utmost control





## **Motorola's Enterprise-Wide Integrated Networks**

The seamless enterprise is here. Motorola's information solutions and communication networks give today's utility companies greater control and the ability to respond instantly.

People to people. People to things. Things to things. Systems interacting with each other. And wireless platforms that integrate networks. All to provide the power you need to seamlessly monitor, know, and act with the utmost control.

To learn more about how Motorola can help you design a new mobility strategy for your company, please contact your sales representative.



Integrated Network

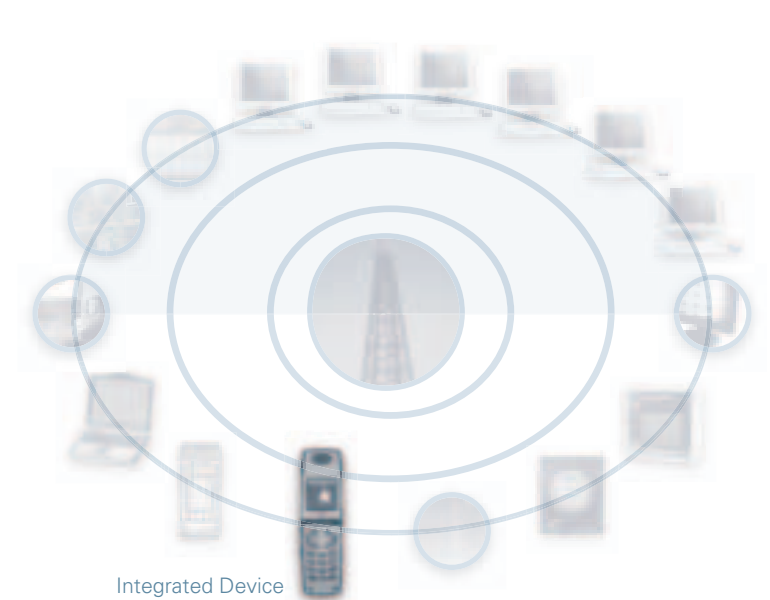
#### FEATURES

- Integrated dispatch voice, data and cellular network
- IP data network for both mobile and fixed data applications
- Extensive subscriber product portfolio

#### BENEFITS

- Get the right information to the right people in a timely manner
- Increase workforce productivity
- Make informed decisions more quickly
- Use defined talkgroups to communicate with several workers with one call
- Complete control of your wireless communication system

**Harmony**<sup>TM</sup>  
Wireless Communication System



Integrated Device

#### FEATURES

- Two-way digital radio; digital wireless phone; alphanumeric messaging; and data/fax capabilities leveraging Internet access technology
- GPS, Data and JAVA enabled

#### BENEFITS

- Worldwide acceptance
- Meets the needs of both field workers and executives
- Backed by high volume in the commercial market
- Many choices with frequent new releases

**iDEN**<sup>®</sup> Subscribers



**Integrated Network**

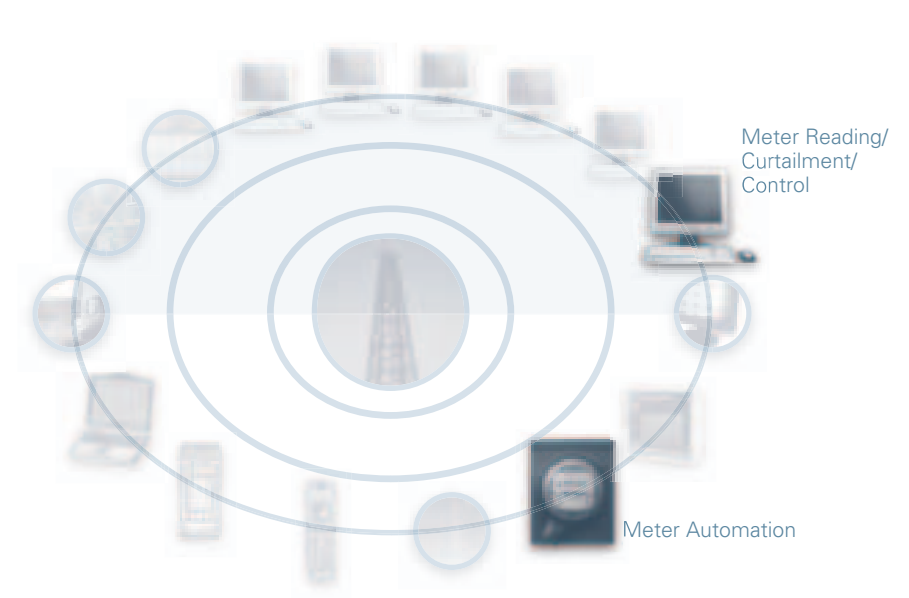
**FEATURES**

- Built on the proven Canopy™ Broadband Internet Platform
- Connects users to a broadband network using low voltage wires
- Delivers speeds comparable to cable and DSL
- Designed using the HomePlug Protocol with added security, encryption and provisioning

**BENEFITS**

- Minimal capital, solid ROI
- Complete scalability
- Non-invasive customer install
- Easy migration to emerging technologies
- Easy to install and maintain
- Expert resources and support including system design for a total solution
- Acts as a backhaul for core utility applications such as AMR, SCADA and substation monitoring

# Powerline LV Solution



**FEATURES**

- Fixed base network
- IMR transmitter reads outdoor installed meters
- Based on proven MOSCAD technology platform
- Seamlessly integrates public and private networks into one AMR network, maximizing coverage

**BENEFITS**

- Reduce operating expenditures
- Improve accuracy, revenues and profits
- Identify faulty meters for replacement

# Fixed Network AMR



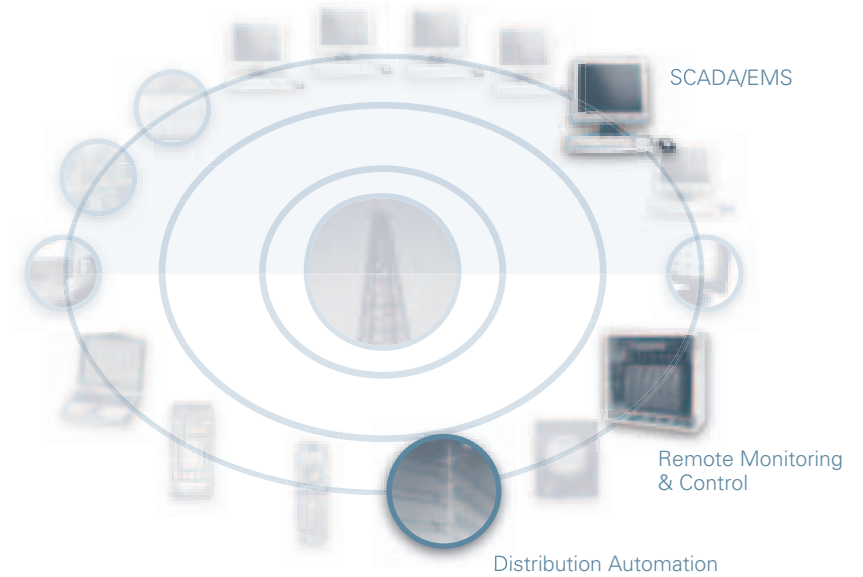
#### FEATURES

- Ruggedized designs – from small handheld devices to laptop computers
- Multiple network compatibility
- Integrated wireless communications

#### BENEFITS

- Unbeatable combination of portability, versatility and heavy-duty computer capabilities
- Connect mobile workforce to the information they need, where and when they need it
- Gain access to key enterprise information more efficiently
- Prepare and submit critical reports, forms or other “paperwork” from the field

# Mobile Data Terminals



#### FEATURES

- Motorola’s SCADA and RTU platform
- Supports multiple protocol switches, reclosers and capacitors
- Supports multiple protocol translations for your host SCADA application
- Modular system design
- Low, mid and high tier product portfolio

#### BENEFITS

- Detect and isolate faults
- Avoid major overhauls and expenses
- Improves operational efficiency
- Leverages existing infrastructure

# Distribution Automation



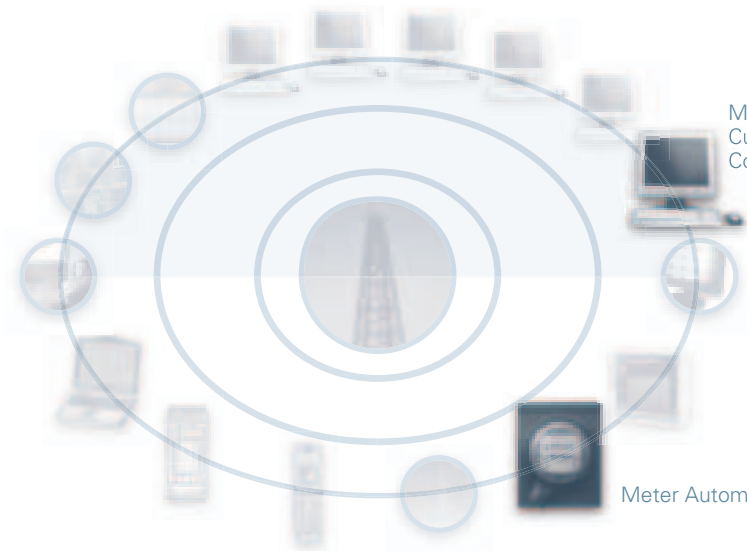
Dispatch Center



CAD/Work Order Dispatch/GPS

AM/FM/GIS

Desktop Dispatching



Meter Reading/  
Curtailment/  
Control

Meter Automation

#### FEATURES

- IP LAN based dispatch program
- Software only, no radio equipment needed on the computer
- PC to PC, PC to Mobile, anywhere in the world via the Internet
- Private call, wide area group call, call alert and dynamic group calls

#### BENEFITS

- Deliver dispatch and messaging services to users in your Harmony network
- Easy-mount, compact server
- Effortless network management
- Leverage existing computers and LAN

#### FEATURES

- Compatible with multiple ANSI compliant electronic meters
- Interface to legacy back office applications

#### BENEFITS

- Reduce your operating expenses associated with C&I meter reading by leveraging your existing wireless networks
- Seamlessly integrate public and private networks into one AMR network, maximizing coverage

# NetDispatch®

# C&I Gas and Electric AMR



Internet  
Web Portal

CAD/Work Order  
Dispatch/GPS

#### FEATURES

- Locate your vehicles 24/7 with speed, fuel, mileage, stops and vehicle diagnostic information
- Reporting – View on-demand reports and statistics about your fleet or each vehicle
- Choice of technologies include GPRS, CDMA, satellite and short range RF
- Remote monitoring of vehicle state data/telemetry data, geofencing, mapping and navigation

#### BENEFITS

- Achieve reductions in fuel costs and overall mileage
- Reduce overtime costs and increase revenue
- Easily integrates with existing legacy systems
- Multiple network options to meet your business needs
- Increase utilization of vehicle fleet



Integration  
Middleware

#### FEATURES

- Mobile application allows for any laptop or PDA to automate operations in the field
- Mobile Command Center lets dispatchers monitor field personnel more efficiently
- Easy-to-use drag and drop design
- Administrative software allows for total configuration according to your utility's own requirements

#### BENEFITS

- Eliminate paper-based business processes
- Streamline and standardize work in the field
- Increase productivity and service reliability
- Configure the application according to your specific needs
- Reduce operational costs

# Fleet Management Solutions

# Field Service Application for Utilities





1301 E. Algonquin Road  
Schaumburg, Illinois 60196  
1-800-367-2346